

HydroBeam M2

Portable Multibeam Echo Sounder



HydroBeam M2

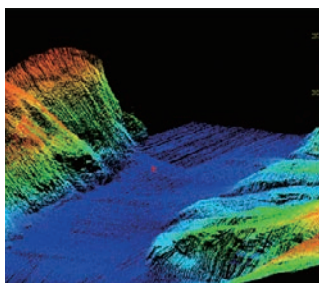
The HydroBeam M2 is Satlab's latest portable multibeam product featuring an innovative data acquisition method. It delivers enhanced quality accuracy and intelligent operation, supports compact USV mounting, offers a more integrated multibeam sonar system, and enables efficient post-processing.

It precisely and comprehensively captures dynamic underwater microtopography, delivering high-definition seabed imagery for underwater visualization. Customized solutions provide high-precision bathymetric data alongside point cloud and imagery outputs in various formats.

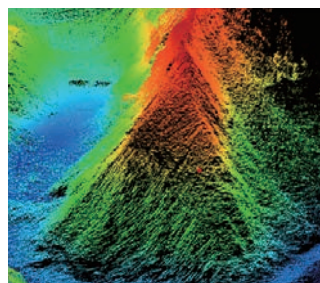
Optimal Solution—HydroBeam M2 & HydroBoat 1200 Gen2



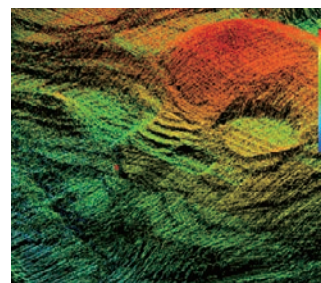
Applications



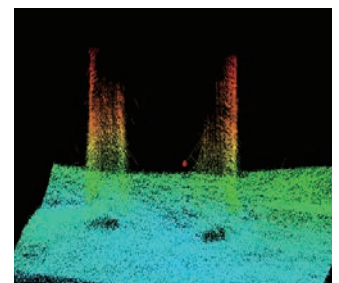
Rivers



Ridges



Terraced Fields

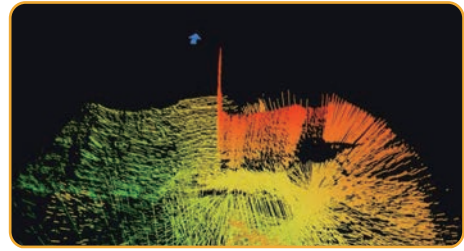


Vertical Walls

Advantages

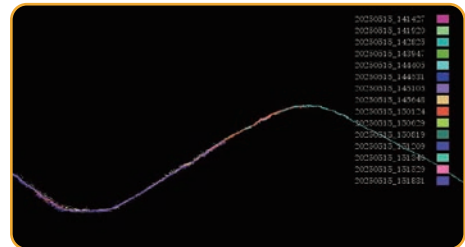
1 Live 3D Point Cloud & Side Scan Imaging

Real-time XYZ point cloud and side scan images on multiple terminals –view and monitor while surveying.



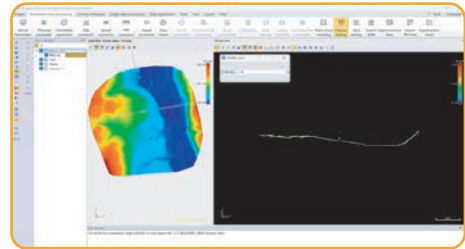
2 SVP-Free Sound Velocity Correction

Powered by SPIN(Sound Speed Profile Inversion), the system ensures precise sound velocity correction without extra SVP devices.

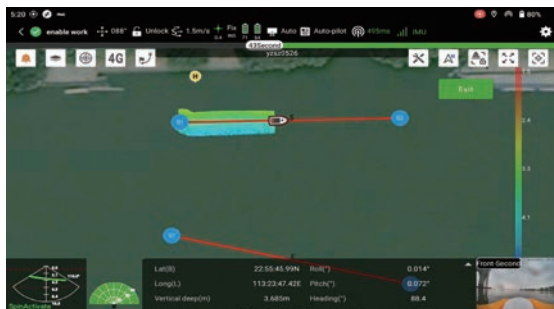


3 Professional Post-processing Software

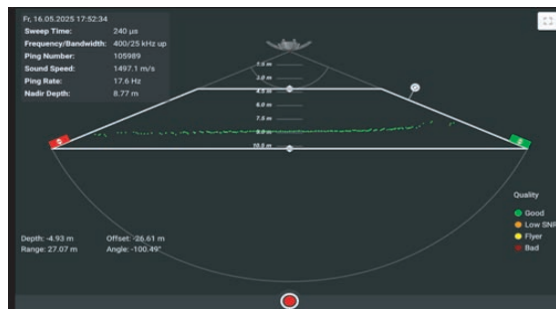
Satlab's proprietary multibeam post-processing software, SLHydroBeam Processing Software, encompasses data processing, production applications, and data output.



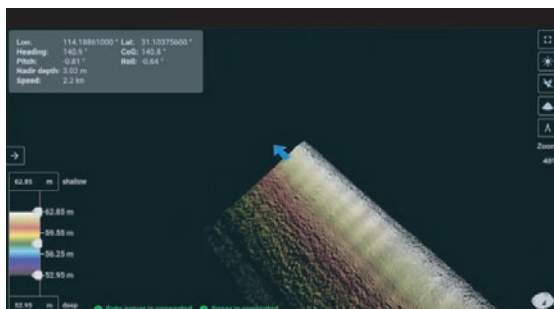
Function



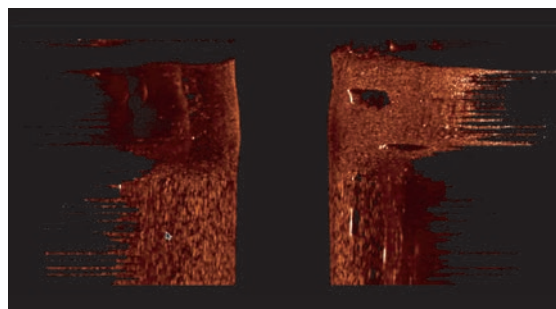
Android Collection



Multibeam Wave Display



Real 3D Point Cloud



Side Scan Image

Specification

Frequency	400 KHz
Beam Width	1.4° * 1.7°
Number of Beams	512
Swath Coverage	30°-150°
Depth Range	0.2-200 m
Vertical Resolution	1 cm
Max Ping Rate	60 HZ
Weight (in air)	1.7kg
Dimension	169*166*50mm
Operating/Storage Temperature	-4°C~40°C/-20°C~60°C
Satellite System	GPS, BDS, GLONASS, Galileo, QZSS, SBAS, L-Band
Positioning Accuracy	H: ±8mm+1ppm, V: ±20mm+1ppm
Heading Accuracy	0.08° (2m baseline)
Roll & Pitch Accuracy	0.03°
Heave Accuracy	5cm / 5% range
SPIN Function	Available
Roll stabilization	Available
Side Scan image	Available



*Specifications are subject to change without notice. We reserve the right of final interpretation.
*All listed parameters are either theoretical values or measured under controlled conditions.



Headquarters:

Geosolution i Göteborg AB
Stora Ävägen 21, 436 34 ASKIM,
Sweden

Regional Offices:

Budapest, Hungary
Ankara, Turkey
Dubai, UAE
New Delhi, India
Scottsdale, USA
Tokyo, Japan
Hong Kong, China

www.satlabgeo.com

